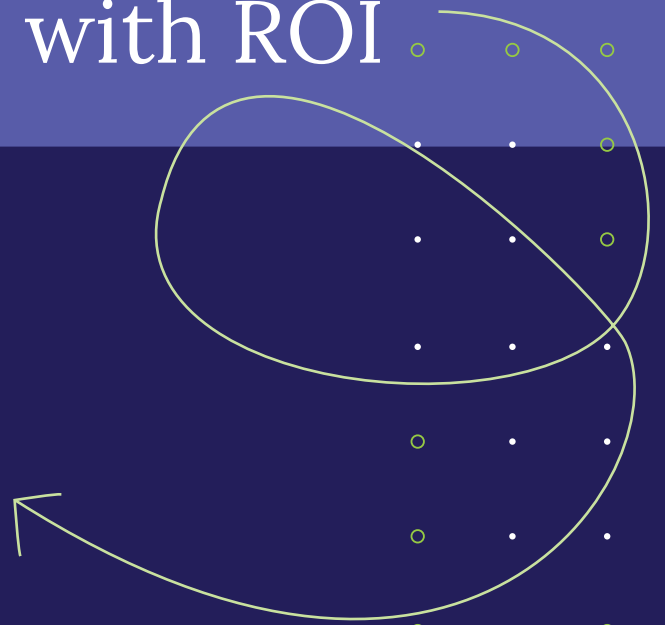




# How to Maximize Your End-of-Year Data with ROI

A practical guide for end-of-year reflection and next year planning



# End-of-Year Planning at-a-Glance

End-of-year data provide insights to ground reflection on progress, identify opportunities for growth and change, and plan for the new school year ahead.

Rather than reviewing every available report, effective end-of-year conversations focus on a small number of questions and the reports that best support them. This guide highlights the ROI reports most commonly used at end-of-year and offers guidance on how to use them in practical, action-oriented discussions.



## Key Questions to Anchor End-of-Year Conversations:

- Are final course grades truly reflecting what students have mastered?
- Who are the “bubble students” heading into next year?
- Did the programs and resources we invested in this year actually move the needle?
- How well did our benchmark assessments predict state assessment performance?
- Where do we need to focus support, intervention, or resources heading into next year?
- Did students grow from beginning-of-year to end-of-year, and how does that compare to last year?

This guide is designed to support conversation and planning. Pair it with the [ROI Report Collection](#) for a complete view of available ROI reports.

# Academic Impact Manager Report

## Why This Report Is Useful at End-of-Year

The Academic Impact Manager (AIM) supports year-over-year comparison, making it a strong starting point for end-of-year reflection.

## End-of-Year Questions It Helps Answer

- How does beginning-of-year to end-of-year growth compare to last year?
- Where are we seeing stronger or weaker growth trends?
- Are there differences across schools, grades, or student groups?

## How to Use It in Conversation

- Start at the district or school level to identify patterns
- Use comparisons to frame discussions around progress and pacing
- Focus on trends that may warrant further investigation or support



## End-of-Year Takeaway

Use this report to understand how growth this year is tracking compared to prior years and to set the foundation for next year's planning.

The screenshot shows the 'Academic Impact Manager' interface. At the top, there are navigation options: 'Print', 'CSV', and 'PDF'. Below these are two warning icons: a triangle for 'Warnings' and a circle for 'Indicates a group in the top 25% percentile for the column.' and 'Indicates a group in the bottom 25% percentile for the column.' There are also buttons for 'Copy Preset', 'Filters', and 'Refresh Report'. A search bar is present on the right. The main table displays data for 'Grade Level' across three metrics: '23-24 Summative Math Net Growth', '23-24 Summative Math Learning Loss', and '23-24 Summative Math Proficiency'. The data is color-coded: green for positive growth/proficiency and red for negative growth/learning loss.

Grade Level	23-24 Summative Math Net Growth	23-24 Summative Math Learning Loss	23-24 Summative Math Proficiency
All Grade Levels	0.14%	51.83%	38.85%
2nd grade	1.08%	54.69%	55.11%
3rd grade	-3.6%	69.92%	60.37%
4th grade	-2.32%	64.76%	51.38%
5th grade	-2.23%	61.9%	35.27%
6th grade	0.15%	47.98%	35.18%
7th grade	1.2%	45.81%	28.83%

# Growth Report

## Why This Report Is Useful at End-of-Year

The eROI Growth Report highlights how students grew throughout the year and surfaces those who experienced learning loss or stagnant growth, making it a practical tool for back-to-school placement planning.

### End-of-Year Questions It Helps Answer

- How did student growth vary across grades, schools, and teachers?
- Which students showed the most learning loss or stagnant growth?
- Where are we seeing the strongest and weakest instructional impact?

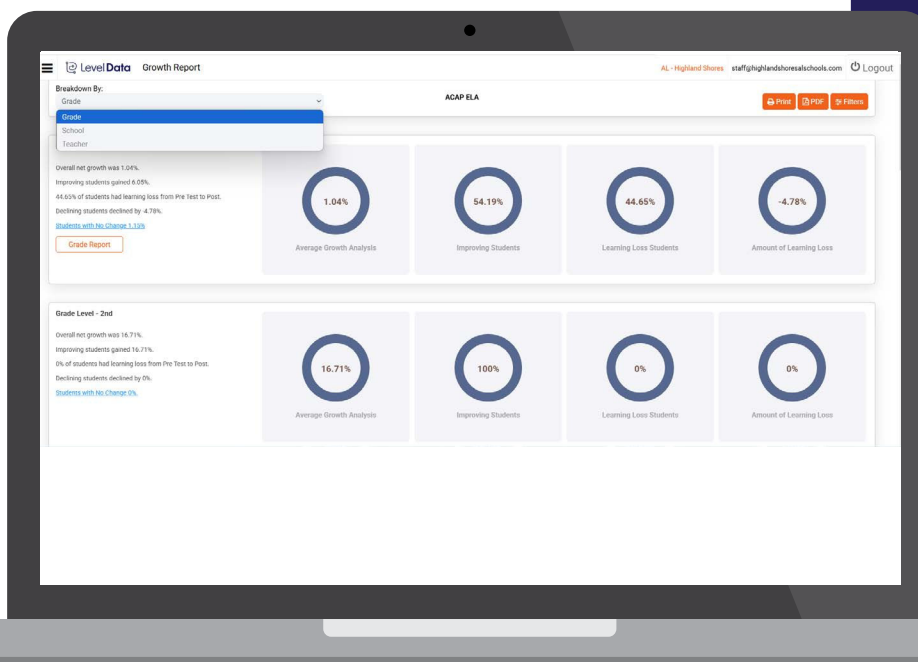
### How to Use It in Conversation

- Review break downs by grade, school, or teacher to identify where support is needed
- Use learning loss data to inform back-to-school placement decisions
- Pair with the AIM Report to connect student growth trends to broader instructional patterns



## End-of-Year Takeaway

Use this report to identify which students need additional support and to make informed back-to-school placement decisions.



# Proficiency Report

## Why This Report Is Useful at End-of-Year

The Proficiency Report helps identify where students landed at the end of the year and who may need early support heading into next year.

### End-of-Year Questions It Helps Answer

- Who are our "bubble students" heading into next year?
- What is the overall proficiency rate across grades, schools, and subgroups?
- Where are the biggest gaps and what do they mean for next year?

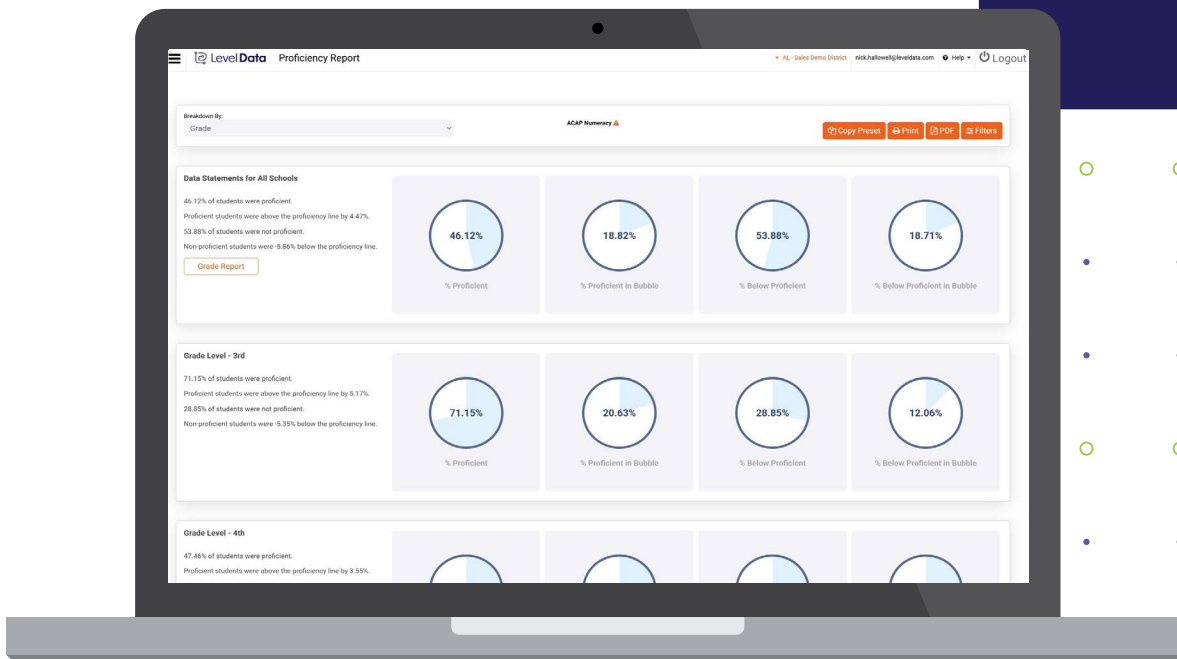
### How to Use It in Conversation

- Use the report to flag students for targeted support or enrichment going into next year
- Look across schools and grades to identify systemic gaps
- Pair with AIM data to understand both where students ended up and how they got there



## End-of-Year Takeaway

Use this report to surface who needs support heading into next school year and to inform placement, intervention, and resource allocation decisions.



# Academic Correlation Engine (ACE) Report

## Why This Report Is Useful at End-of-Year

The ACE Report helps districts evaluate whether final course grades are truly reflecting student mastery before the year closes out.

### End-of-Year Questions It Helps Answer

- Are final course grades reflective of students' actual mastery?
- Are there patterns of grade inflation or deflation by teacher or campus?
- Which grade levels show the strongest or weakest alignment?

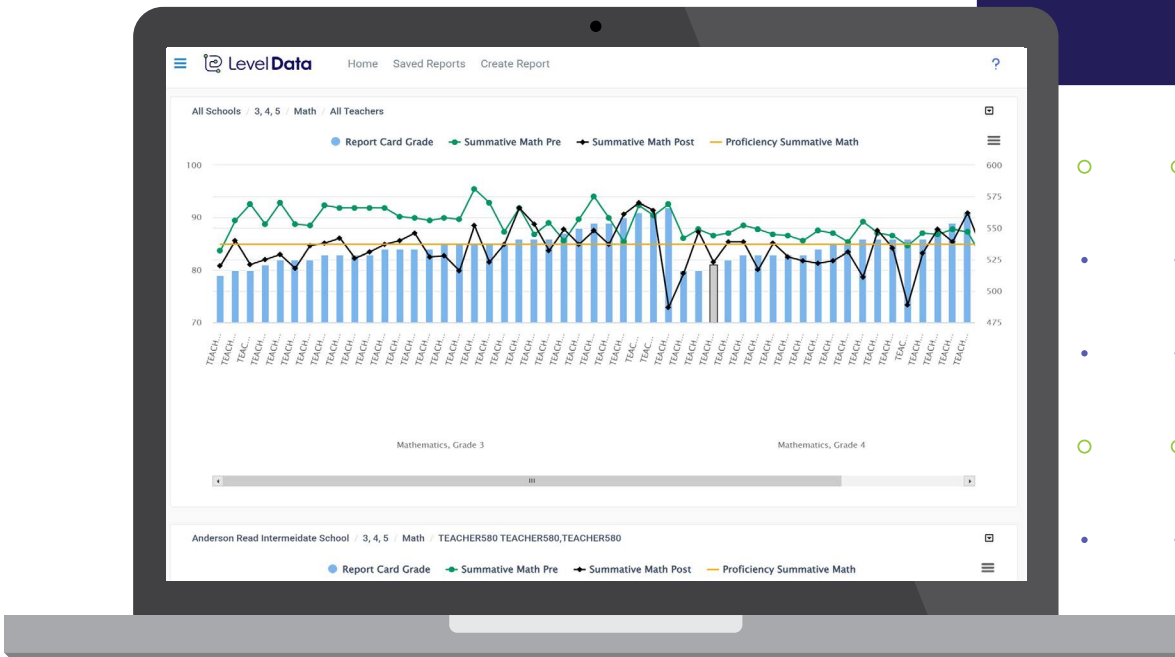
### How to Use It in Conversation

- Use the report to support grading alignment discussions, not to assign blame
- Identify areas of misalignment as opportunities for coaching conversations
- Pair with AIM data to consider both growth and grade accuracy



## End-of-Year Takeaway

Use this report to ensure the grades students leave with this year honestly reflect what they have learned.



# Return on Assessment (ROA) Report

## Why This Report Is Useful at End-of-Year

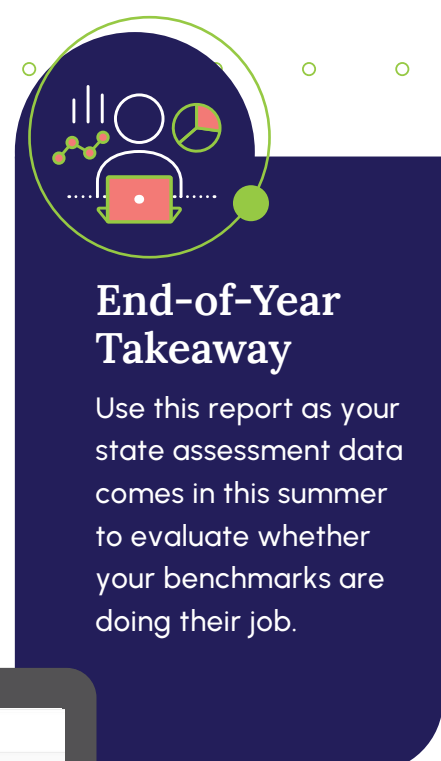
The ROA Report helps districts evaluate how well benchmark assessments predicted state assessment performance. This report will be most useful as state data begins arriving this summer.

### End-of-Year Questions It Helps Answer

- How well did our benchmark assessments align with state assessment outcomes?
- Which benchmarks were the strongest predictors of state performance?
- Where are there discrepancies between benchmark and state results?

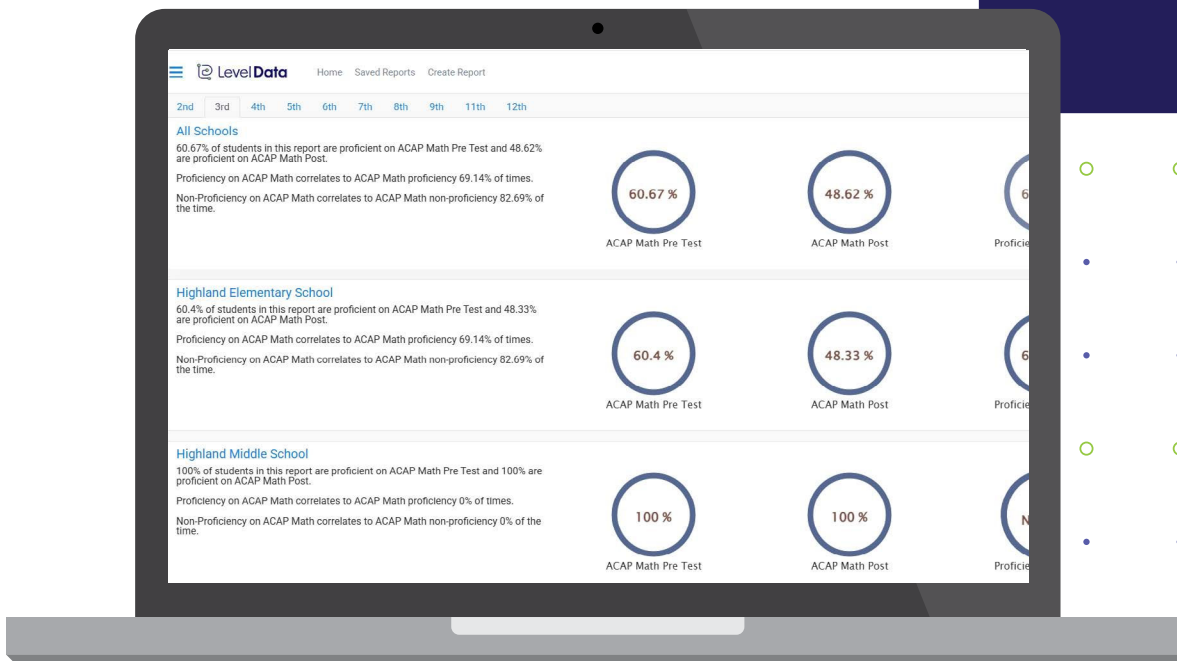
### How to Use It in Conversation

- Compare proficiency rates across assessments to identify gaps
- Use findings to inform assessment selection for next year



**End-of-Year Takeaway**

Use this report as your state assessment data comes in this summer to evaluate whether your benchmarks are doing their job.



# Resource Report

## Why This Report Is Useful at End-of-Year

The Resource Report supports end-of-year budget and renewal conversations by connecting program costs and usage to actual student outcomes.

## End-of-Year Questions It Helps Answer

- Which programs delivered meaningful outcomes relative to their cost?
- Where did usage fall short, and what might explain the gap?
- Where should we reallocate resources to maximize impact next year?

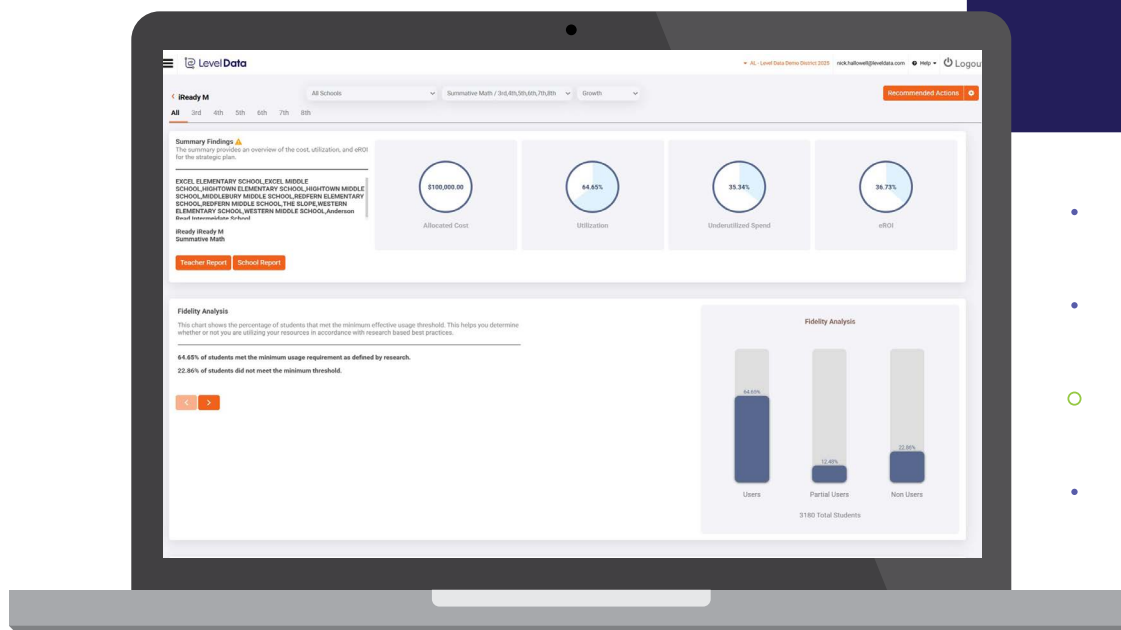
## How to Use It in Conversation

- Review usage and outcome data side-by-side to identify high and low performing investments
- Use findings to build an evidence-based case for budget decisions with stakeholders
- Pair with AIM data to connect program usage directly to student growth



### End-of-Year Takeaway

Use this report to walk into next year's budget conversations with evidence, not guesswork.



# Keep Growth Going Strong Next Year with Insight From ROI

End-of-year is more than a finish line. It is a starting point for everything that comes next.

The data you review now will shape the decisions you make about instruction, investment, and support heading into the new school year. ROI gives you the tools to close the year with clarity and to plan next year with confidence, knowing what worked, what did not, and where your students need you most.

The Level Data team is here to help you make the most of ROI. Contact your Customer Success Manager if you would like to schedule a data review or have questions about which reports will provide the answers and information you need.

