



# How to Maximize Your Midyear Data with ROI

A practical guide for  
planning and reflection  
conversations



# Midyear Planning at-a-Glance

Midyear data provides an important checkpoint. It's an opportunity to reflect on progress, surface emerging needs, and adjust plans for the remainder of the year.

Rather than reviewing every available report, effective midyear conversations focus on a small number of questions and utilize the data that best support them. This guide highlights the ROI reports most commonly used at midyear and offers guidance on how to use them in practical, action-oriented discussions.

## Key Questions to Anchor Midyear Conversations:

- How does growth this year compare to last year?
- Which students are showing decreasing performance from beginning-of-year to midyear?
- Who are "bubble students" near proficiency?
- Are digital programs being implemented as intended?
- Where might additional student support or adjustments be needed?
- What professional development or coaching is needed for teachers?

This guide is designed to support conversation and planning. Pair it with the [ROI Report Collection](#) for a complete view of available ROI reports.



# Academic Impact Manager Report

## Why This Report Is Useful at Midyear

The Academic Impact Manager supports year-over-year comparison, making it a strong starting point for midyear reflection.

## Midyear Questions It Helps Answer

- How does beginning-of-year to midyear growth compare to last year?
- Where are we seeing stronger or weaker growth trends?
- Are there differences across schools, grades, or student groups?

## How to Use It in Conversation

- Start at the district or school level to identify patterns
- Use comparisons to frame discussions around progress and pacing
- Focus on trends that may warrant further investigation or support



## Midyear Takeaway

Use this report to understand how growth this year is tracking compared to prior years.

Grade Level	23-24 Summative Math Net Growth	23-24 Summative Math Learning Loss	23-24 Summative Math Proficiency
All Grade Levels	0.14%	51.83%	38.85%
2nd grade	1.08%	54.69%	55.11%
3rd grade	-3.6%	69.92%	60.37%
4th grade	-2.32%	64.76%	51.38%
5th grade	-2.23%	61.9%	35.27%
6th grade	0.15%	47.98%	35.18%
7th grade	1.2%	45.81%	26.83%

# Proficiency Report

## Why This Report Is Useful at Midyear

The Proficiency Report helps identify students who are near proficiency and may benefit from targeted instructional adjustments.

## Midyear Questions It Helps Answer

- Who are our "bubble students" (students just above or just below proficiency)?
- Where could small changes have a meaningful impact?
- How do proficiency trends vary across grades or groups?

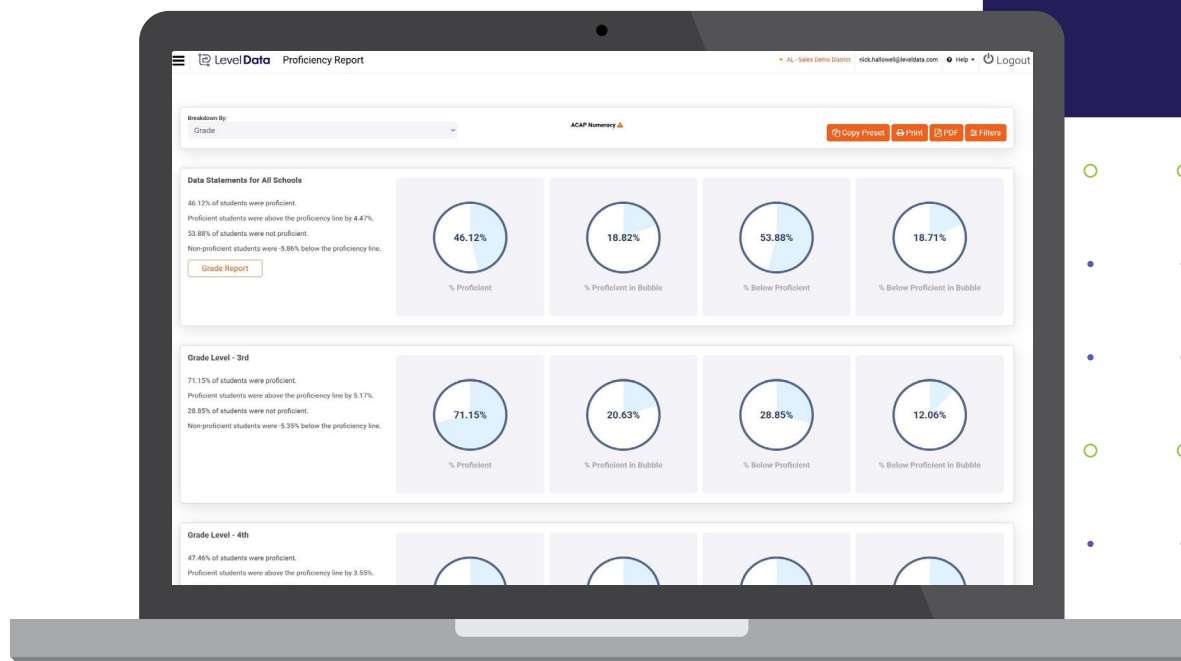
## How to Use It in Conversation

- Use the report to flag students for follow-up or support
- Pair insights with instructional context to explore potential causes
- Keep the focus on identifying needs rather than assigning blame



## Midyear Takeaway

Use this report to surface early risk and guide intervention conversations.



# Academic Correlation Engine (ACE) Report

## Why This Report Is Useful at Midyear

The ACE Report helps identify students whose performance is declining from pre-test to midyear and supports analysis of grade correlation by teacher.

## Midyear Questions It Helps Answer

- Which students are showing signs of decreasing performance?
- Are there patterns by grade, subject, or classroom?
- Where might early intervention be needed?

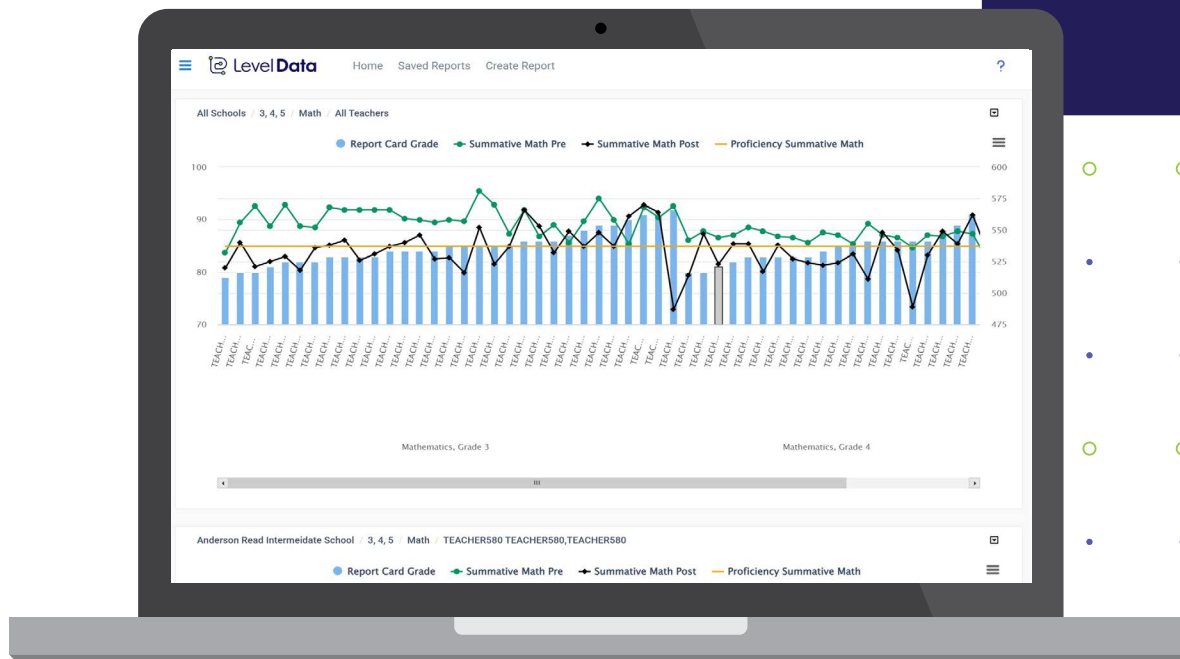
## How to Use It in Conversation

- Use the report to support instructional planning discussions
- Prioritize students near key thresholds
- Pair with ACE report insights to consider both growth and risk



## Midyear Takeaway

Use this report to focus on students who may benefit most from targeted support.



# Resource Report

## Why This Report Is Useful at Midyear

The Resource Report supports reflection on digital program implementation and usage and can help with PD, budgeting and resource allocation decisions.

## Midyear Questions It Helps Answer

- Are digital programs being used as intended?
- Where might implementation gaps exist?
- How does usage align with student outcomes?

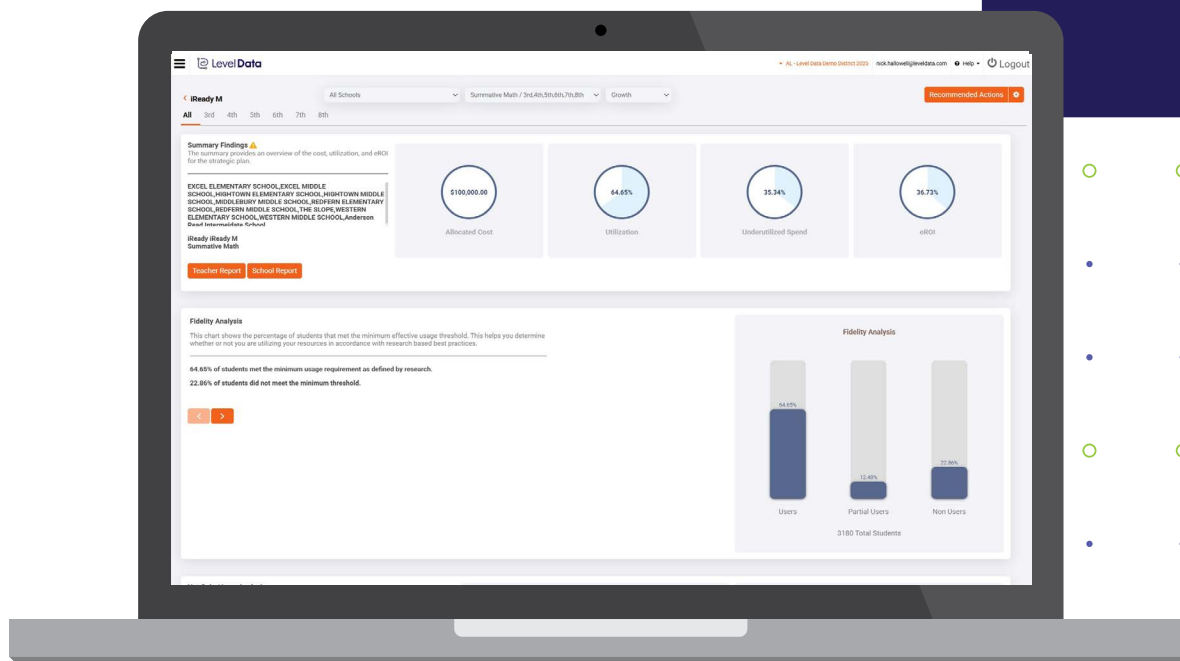
## How to Use It in Conversation

- Review usage patterns alongside academic data
- Identify where additional teacher coaching or support may be needed
- Use findings to inform next steps rather than evaluate past decisions



## Midyear Takeaway

Use this report to connect implementation with outcomes.





# Program Utilization Report

## Why This Report Is Useful at Midyear

The Program Utilization Report provides a clear view of how educational programs are being used across schools and student groups, helping districts identify engagement patterns and opportunities for improvement at midyear.

## Midyear Questions It Helps Answer

- Which programs are seeing high, partial, or minimal engagement?
- Where are there gaps between program availability and actual usage?
- Are certain student groups engaging with programs at different rates?

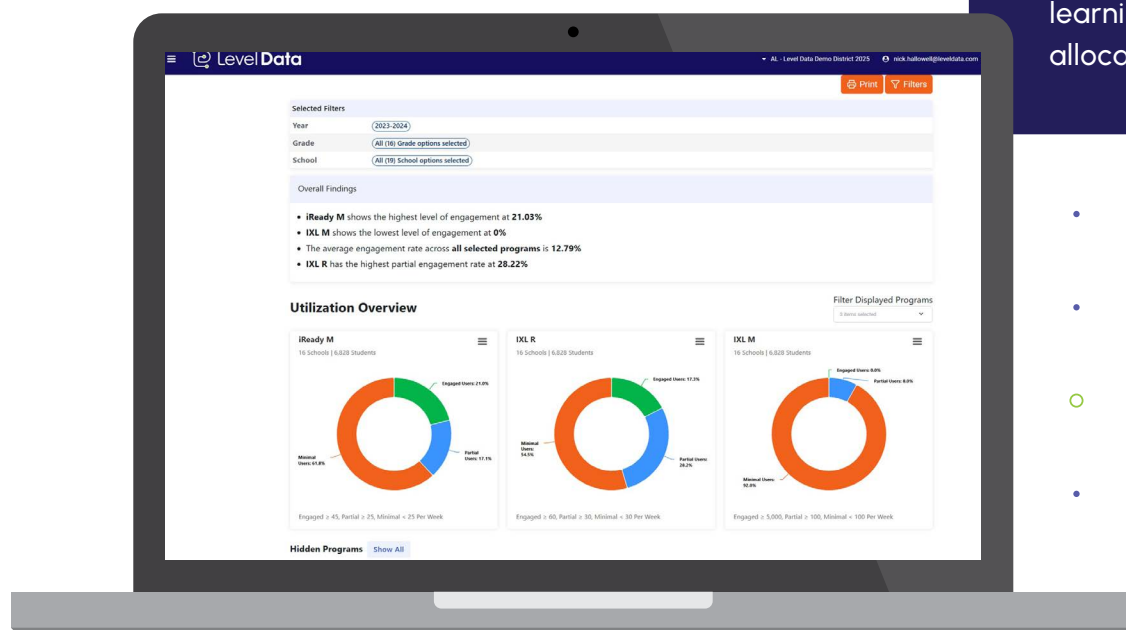
## How to Use It in Conversation

- Compare program tiles side by side to identify relative levels of engagement
- Review engagement parameters to understand how usage is defined for each program
- Use AI-powered findings to surface notable trends or patterns worth discussing



## Midyear Takeaway

Use this report to understand how instructional programs are being used and to guide decisions about support, professional learning, or resource allocation.



# Keep Growth Going Strong in the Second Semester with Insight From ROI

The second half of the school year is an opportunity to review what went well in the first semester and where adjustments and support are needed to close gaps, make gains, and increase efficiency.

You'll find deep insights within your ROI reports that will help you make informed decisions about instruction, edtech investments, and professional development. Use these insights to drive toward your goals for this year, as well as to start planning and budgeting for next school year.

The Level Data team is here to help you make the most of ROI. Contact your Customer Success Manager if you'd like to schedule a data review or have questions about which reports will provide the answers and information you need.

